

The background of the entire page is a photograph of a large, industrial-grade continuous bread slicer. The machine is primarily white with some grey components. It features a series of vertical blades that slice bread as it moves through. A yellow conveyor belt is visible in the middle section. The machine has a sturdy metal frame and a large handle on the side. The lighting is bright, highlighting the metallic surfaces and the texture of the bread being sliced. The logo 'SLIXE' is prominently displayed in the upper right quadrant, with 'FOOD MACHINERY' written below it. The overall design is clean and professional, emphasizing the industrial nature of the equipment.

SLIXE
FOOD MACHINERY

Continuous Bread Slicer

TA-203

PROFESSIONAL . HIGH QUALITY

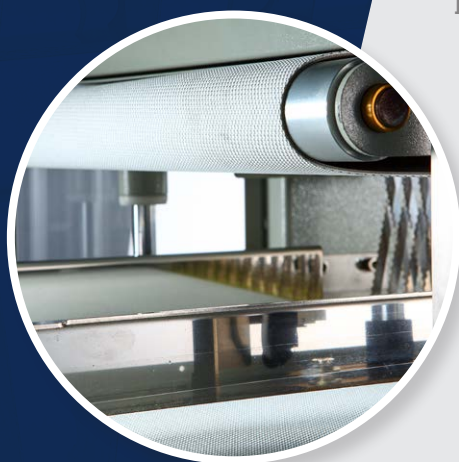
www.ting-an.com

CONTINUOUS BREAD SLICER

TA-203



➤ Adjustable side guides
For different length of loaf

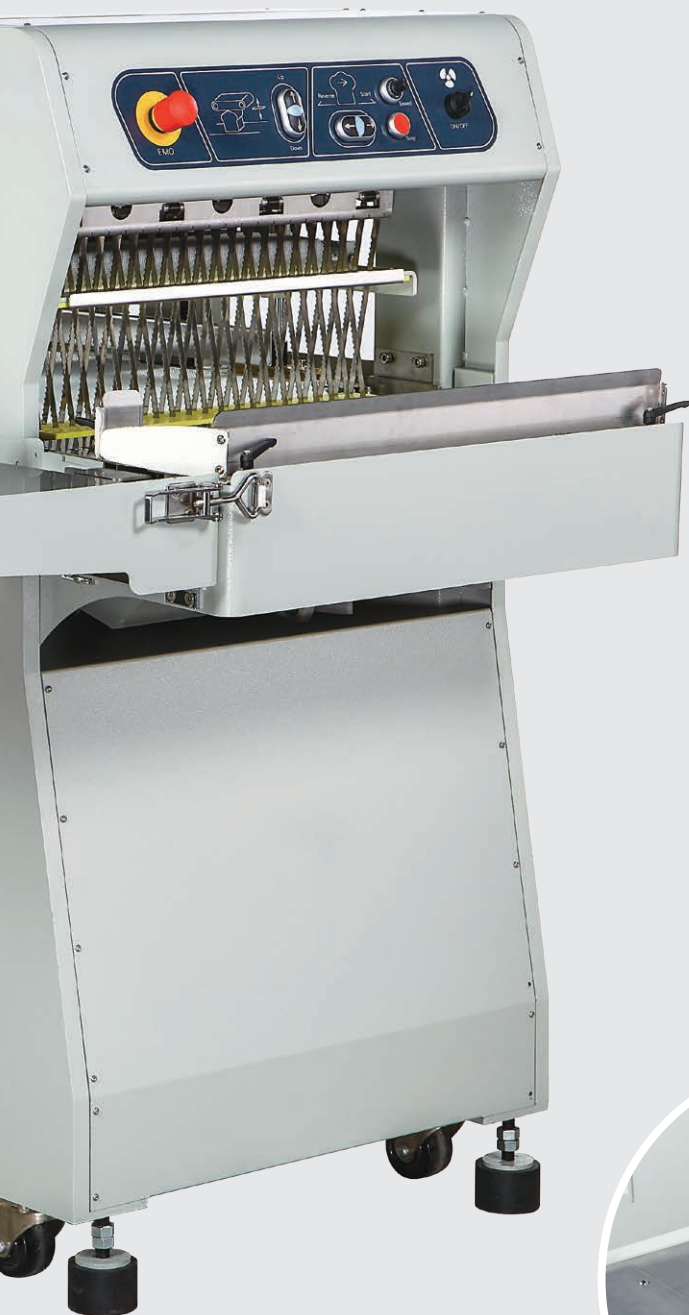


➤ Adjustable upper conveyor belt
Can adjust the upper belt height for
different height of loaves



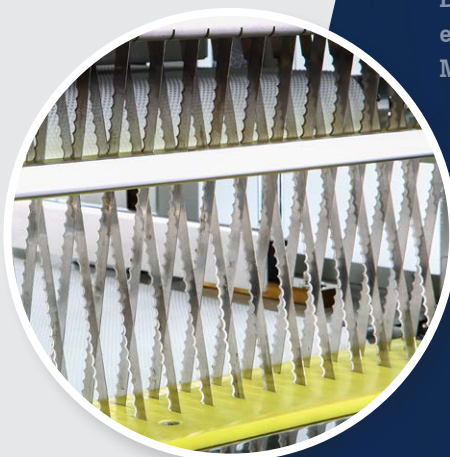
➤ Collector for crumbs

Model	TA-203
Max. loaf dimension (WxH)	52 x 18 cm
Standard thickness of slice	12mm (8 - 30 Customized slice thickness)
Capacity	1200 - 1600 loaves / per hour
Motor power	1.1 KW
Voltage	220 / 380V * 50 / 60 HZ* 3PH
Dimension	1600*1285*1370 mm
Net weight	340 KG



> Control Panel

Double conveyor belt with electronic variable speed.
Machine with reverse button.



> Cross-slice system

Increasing work efficiency.



> Bag blower device

Save packaging time

- ▶ All kinds of bread can be sliced
- ▶ Cross-slice system
- ▶ High speed and efficiency
- ▶ Machine with bag blower device for quick Packaging
- ▶ Wide selection of slice thickness from 8 to 30mm
- ▶ Up to 1,300 breads per hour



PROFESSIONAL . HIGH VALUE . HIGH QUALITY

SLIXE FOOD MACHINERY will constantly upgrade and develop bakery machines in the future. Our goal is to provide products to customers with the highest quality and the most competitive price and to satisfy customers' need.



SLIXE
FOOD MACHINERY

No.43-5, Longyang Ln., Xitun Dist.,
Taichung City 407, Taiwan (R.O.C.)

TEL : 886-4-2251-8812

FAX : 886-4-2252-3212

E-mail : sales@ting-an.com

www.ting-an.com